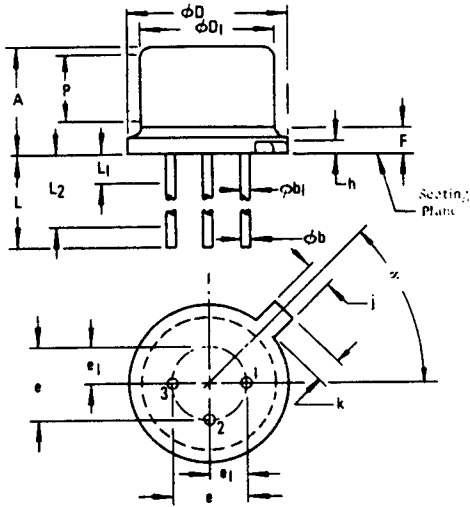


NOTES :

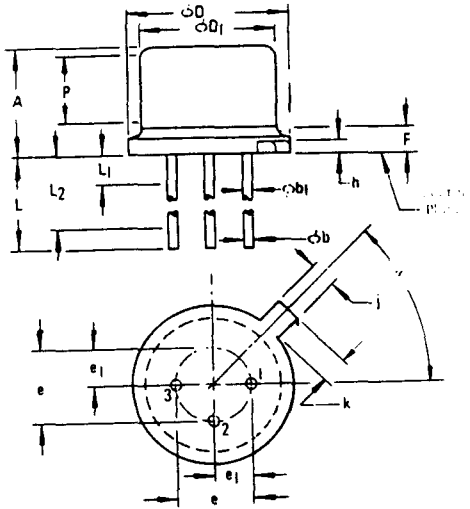


1. REFER TO APPLICABLE SYMBOL LIST.
2. DIMENSIONING AND TOLERANCING PER ANSI Y14.5, 1973.
3. ϕb APPLIES BETWEEN L_1 AND L_2 . ϕb APPLIES BETWEEN L_2 AND L . DIAMETER IS UNCONTROLLED IN L_1 AND BEYOND L MINIMUM.
4. LEADS HAVING A MAXIMUM DIAMETER OF .482 MEASURED IN GAUGING PLANE 1.732-1.397 BELOW THE REFERENCE PLANE OF THE DEVICE SHALL BE LOCATED AT POSITION TOLERANCE WITHIN .356 DIAMETER RELATIVE TO MAXIMUM WITH TAB. DEVICE MAY BE MEASURED BY DIRECT METHODS OR BY GAUGE AND GAUGING PROCEDURES DESCRIBED ON GAUGE DRAWING GS-2.
5. MEASURED FROM MMC OF DEVICE.
6. ϕD_1 SHALL NOT VARY MORE THAN .254 IN ZONE P. ZONE P CONTROLLED FOR AUTOMATIC HANDLING.
7. VARIATION AF HAS FOUR LEADS.
8. VARIATION AG HAS NO INDEX TAB.
9. CONTROLLING DIMENSIONS: INCH.

VARIATIONS (ALL DIMENSIONS SHOWN IN MILLIMETERS)

SYMBOL	AA		NOTE	AB		NOTE	AC		NOTE	AD		NOTE
	MIN.	MAX.		MIN.	MAX.		MIN.	MAX.		MIN.	MAX.	
	A	4.32		5.33			1.66	2.15			2.93	
ϕb	.41	.53	3	.41	.53	3	-	.53	3	.41	.53	3
ϕb_1	.41	.48	3	.41	.48	3	.41	.48	3	.41	.48	3
ϕD_1	5.31	5.84		5.31	5.84		5.31	5.84		5.31	5.84	
e	4.53	4.95		4.53	4.95		4.53	4.95		4.53	4.95	
e	2.54	BSC	4	2.54	BSC	4	2.54	BSC	4	2.54	BSC	4
e_1	1.27	BSC	4	1.27	BSC	4	1.27	BSC	4	1.27	BSC	4
F	-	.76		-	1.01		-	.76		-	1.01	
h	-	-		-	-		-	-		-	-	
j	.92	1.16		.92	1.16		.92	1.16		.92	1.16	
k	.72	1.21	5	.72	1.21	5	.72	1.21	5	.72	1.21	5
L	12.70	-	3	12.70	-	3	12.70	-	3	12.70	-	3
L_1	-	1.27	3	-	1.27	3	-	1.27	3	-	1.27	3
L_2	6.35	-		6.35	-		6.35	-		6.35	-	
P	-	-		-	-		-	-		-	-	
α	45°	BSC		45°	BSC		45°	BSC		45°	BSC	
NOTE	1,2,9			1,2,9			1,2,9			1,2,9		
REF.	11.2 Item 109			11.2 Item 109			11.2 Item 109			11.2 Item 109		
ISSUE	B NOV. 82			B NOV. 82			B NOV. 82			B NOV. 82		
JEDEC SOLID STATE PRODUCT OUTLINES			TITLE HEADER FAMILY 2.54 PIN CIRCLE				ISSUE B		DATE NOV. 82		TO-206 VARIATION AA THRU AD	

NOTES :

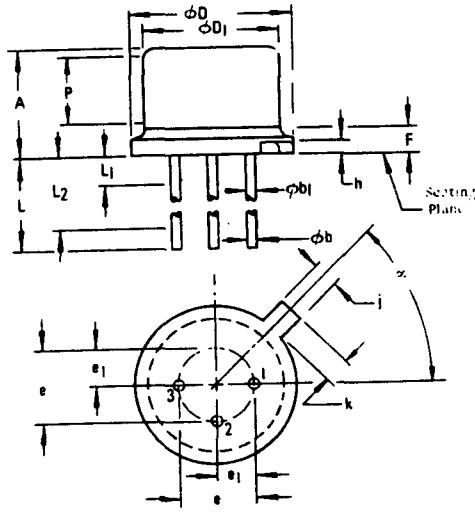


1. REFER TO APPLICABLE SYMBOL LIST.
2. DIMENSIONING AND TOLERANCING PER ANSI Y14.5, 1973.
3. Øb₁ APPLIES BETWEEN L₁ AND L₂. Øb APPLIES BETWEEN L₂ AND L. DIAMETER IS UNCONTROLLED IN L₁ AND BEYOND L₁ MINIMUM.
4. LEADS HAVING A MAXIMUM DIAMETER OF .019 MEASURED IN GAUGING PLANE .054-.055 BELOW THE REFERENCE PLANE OF THE DEVICE SHALL BE LOCATED AT POSITION TOLERANCE WITHIN .014 DIAMETER RELATIVE TO MAXIMUM WIDTH TAB. DEVICE MAY BE MEASURED BY DIRECT METHODS OR BY GAUGE AND GAUGING PROCEDURES DESCRIBED ON GAUGE DRAWING GS-2.
5. MEASURED FROM MMC OF DEVICE.
6. ØD₁ SHALL NOT VARY MORE THAN .010 IN ZONE P. ZONE P CONTROLLED FOR AUTOMATIC HANDLING.
7. VARIATION AF HAS FOUR LEADS.
8. VARIATION AG HAS NO INDEX TAB.
9. CONTROLLING DIMENSION: INCH.

VARIATIONS (ALL DIMENSIONS SHOWN IN INCHES)

SYMBOL	AA		NOTE	AB		NOTE	AC		NOTE	AD		NOTE
	MIN.	MAX.		MIN.	MAX.		MIN.	MAX.		MIN.	MAX.	
	A	.170		.210			.065	.085			.115	
Øb	.016	.021	3	.016	.021	3	-	.021	3	.016	.021	3
Øb ₁	.016	.019	3	.016	.019	3	.016	.019	3	.016	.019	3
ØD	.209	.230		.209	.230		.209	.230		.209	.230	
ØD ₁	.178	.195		.178	.195		.178	.195		.178	.185	
e	.100 BSC		4	.100 BSC		4	.100 BSC		4	.100 BSC		4
e ₁	.050 BSC		4	.050 BSC		4	.050 BSC		4	.050 BSC		4
F	-	.030		-	.040		-	.030		-	.040	
h	-	-		-	-		-	-		-	-	
j	.036	.046		.036	.046		.036	.046		.036	.046	
k	.028	.048	5	.028	.048	5	.028	.048	5	.028	.048	5
L	.500	-	3	.500	-	3	.500	-	3	.500	-	3
L ₁	-	.050	3	-	.050	3	-	.050	3	-	.050	3
L ₂	.250	-	3	.250	-	3	.250	-	3	.250	-	3
P	-	-		-	-		-	-		-	-	
α	45° BSC			45° BSC			45° BSC			45° BSC		
NOTE	1,2,9			1,2,9			1,2,9			1,2,9		
REF.	11.2 Item 109			11.2 Item 109			11.2 Item 109			11.2 Item 109		
ISSUE	B NOV. 82			B NOV. 82			B NOV. 82			B NOV. 82		
JEDEC SOLID STATE PRODUCT OUTLINES			TITLE HEADER FAMILY .100 PIN CIRCLE				ISSUE B		DATE NOV. 82		TO-206 VARIATION AA THRU AD	

NOTES:

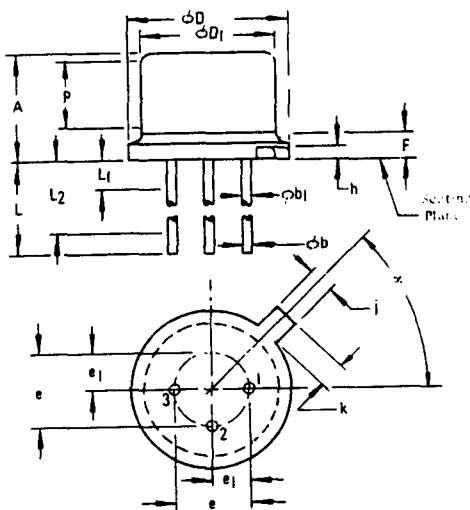


1. REFER TO APPLICABLE SYMBOL LIST.
2. DIMENSIONING AND TOLERANCING PER ANSI Y14.5, 1973.
3. ϕb APPLIES BETWEEN L_1 AND L_2 , ϕb APPLIES BETWEEN L_2 AND L . DIAMETER IS UNCONTROLLED IN L_1 AND BEYOND L MINIMUM.
4. LEADS HAVING A MAXIMUM DIAMETER OF .019 MEASURED IN GAUGING PLANE .054-.055 BELOW THE REFERENCE PLANE OF THE DEVICE SHALL BE LOCATED AT POSITION TOLERANCE WITHIN .014 DIAMETER RELATIVE TO MAXIMUM WIDTH TAB. DEVICE MAY BE MEASURED BY DIRECT METHODS OR BY GAUGE AND GAUGING PROCEDURES DESCRIBED ON GAUGE DRAWING GS-2.
5. MEASURED FROM MMC OF DEVICE.
6. ϕD_1 SHALL NOT VARY MORE THAN .010 IN ZONE P. ZONE P CONTROLLED FOR AUTOMATIC HANDLING.
7. VARIATION AF HAS FOUR LEADS.
8. VARIATION AG HAS NO INDEX TAB.
9. CONTROLLING DIMENSION: INCH.

VARIATIONS (ALL DIMENSIONS SHOWN IN MILLIMETERS)

SYMBOL	AE		NOTE	AF		NOTE	AG		NOTE	MIN.	MAX.	NOTE
	MIN.	MAX.		MIN.	MAX.		MIN.	MAX.				
	A	4.32		5.33			4.32	5.33				
ϕb	-	.53	3	.41	.53	3	-	.53	3			
ϕb_1	.41	.48	3	.41	.48	3	.41	.48	3			
ϕD	5.31	5.84		5.31	5.84		6.48	6.98				
ϕD_1	4.63	4.87		4.53	4.95		5.72	6.09				
e	2.54	BSC	4	2.54	BSC	4	2.54	BSC	4			
e1	1.27	BSC	4	1.27	BSC	4	1.27	BSC	4			
F	-	.58		-	.76		.26	.76				
h	.13	.38		-	-		-	-				
j	.92	1.16		.92	1.16		-	-				
k	.77	1.16	5	.72	1.21	5	-	-				
L	12.70	15.87	3	12.70	-	3	38.10	-	3			
L_1	-	.50	3	-	1.27	3	1.27	-	3			
L_2	6.35	-	3	6.35	-	3	-	6.35	3			
p	3.18	-	6	-	-		-	-				
NOTE	45° BSC			45° BSC			45° BSC					
REF.	11.2 Item 109			11.2 Item 109			11.2 Item 109					
ISSUE	B NOV. 82			B NOV. 82			B NOV. 82					
JEDEC SOLID STATE PRODUCT OUTLINES			TITLE HEADER FAMILY 2.54 PIN CIRCLE			ISSUE B		DATE NOV. 82		TO-206 VARIATION AE THRU AG		

NOTES:



1. REFER TO APPLICABLE SYMBOL LIST.
2. DIMENSIONING AND TOLERANCING PER ANSI Y14.5, 1973.
3. ϕb_1 APPLIES BETWEEN L_1 AND L_2 . ϕb APPLIES BETWEEN L_2 AND L . DIAMETER IS UNCONTROLLED IN L_1 AND BEYOND L MINIMUM.
4. LEADS HAVING A MAXIMUM DIAMETER OF .482 MEASURE IN GAUGING PLANE 1.732-1.397 BELOW THE REFERENCE PLANE OF THE DEVICE SHALL BE LOCATED AT POSITION TOLERANCE WITHIN .356 DIAMETER RELATIVE TO MAXIMUM WITH TAB. DEVICE MAY BE MEASURED BY DIRECT METHODS OR BY GAUGE AND GAUGING PROCEDURES DESCRIBED ON GAUGE DRAWING GS-2.
5. MEASURED FROM MMC OF DEVICE.
6. ϕD_1 SHALL NOT VARY MORE THAN .254 IN ZONE P. ZONE P CONTROLLED FOR AUTOMATIC HANDLING.
7. VARIATION AF HAS FOUR LEADS.
8. VARIATION AG HAS NO INDEX TAB.
9. CONTROLLING DIMENSIONS: INCH.

VARIATIONS (ALL DIMENSIONS SHOWN IN INCHES)

SYMBOL	AE		NOTE	AF		NOTE	AG		NOTE	MIN.	MAX.	NOTE
	MIN.	MAX.		MIN.	MAX.		MIN.	MAX.				
A	.170	.210		.170	.210		.320	.350				
ϕb	-	.021	3	.016	.021	3	-	.021	3			
ϕb_1	.016	.019	3	.016	.019	3	.016	.019	3			
ϕD	.209	.230		.209	.230		.255	.275				
ϕD_1	.182	.192		.178	.195		.225	.240				
e	.100 BSC		4	.100 BSC		4	.100 BSC		4			
e_1	.050 BSC		4	.050 BSC		4	.050 BSC		4			
F	-	.023		-	.030		.010	.030				
h	.005	.015		-	-		-	-				
j	.036	.046		.036	.046		-	-				
k	.030	.046	5	.028	.048	5	-	-				
L	.500	.625	3	.500	-	3	1.500	-	3			
L_1	-	.020	3	-	.050	3	.050	-	3			
L_2	.250	-	3	.250	-	3	-	.250	3			
p	.125	-	6	-	-		-	-				
α	45° BSC			45° BSC								
NOTE	1,2,9			1,2,7,9			1,2,8,9					
REF.	11.2 Item 109			11.2 Item 109			11.2 Item 109					
ISSUE	B NOV. 82			B NOV. 82			B NOV. 82					
JEDEC SOLID STATE PRODUCT OUTLINES			TITLE HEADER FAMILY .100 PIN CIRCLE			ISSUE B		DATE NOV. 82		TO-206 VARIATION AE THRU AG		